



October 21-23, 2011

Touhill Performing Arts Center

University of Missouri – St. Louis

A production by Variety Children's Theatre

STUDY GUIDE



STUDY GUIDE

presented by Variety Children's Theatre

TABLE OF CONTENTS

Letter to Teachers	Page 2
Credits	Page 3
The Wizard of Oz Plot Summary	Page 4
Who's Who in Oz	Page 6
Where's Where in Oz	Page 7
Lesson #1 – Adaptation	Page 8
Lesson #2 – Fairy Tale	Page 9
Lesson #3 – Inclusion & Diversity	Page 11
Variety Kids Involved in The Wizard of Oz	Page 13
Types of Disabilities	Page 15
State Curriculum Standards	Page 16
Q&A with Scenic Designer Dunsai Dai	Page 17
Classroom Activities	Page 20
About Variety the Children's Charity of St. Louis	Page 23



STUDY GUIDE

presented by Variety Children's Theatre

LETTER TO TEACHERS

Dear Educators,

Variety Children's Theatre is proud to present its third annual production, *The Wizard of Oz!* Once again under the direction of **Tony Award nominee Lara Teeter**, this show boasts some of the city's greatest talent. We all eagerly await the results of their craft— bringing Dorothy's story to life. Be sure that you and your students are there to experience this with us.

Musical theatre can enhance learning on so many levels. It builds an appreciation for the arts, brings to life a lesson on the parts of a story (i.e. characters, plot, conflict) and provides the perfect setting to learn a thing or two about fairy tales and why they are important windows into important facets of our lives.

Variety takes that learning one step further, however, presenting an inclusive cast where adult equity actors and talented adults and youth from community theatre work side-by-side with children who have a wide range of disabilities. The production is truly a lesson in acceptance, perseverance and the "I Can" spirit that shines through all Variety programs.

Enclosed is a Teacher Packet to help you incorporate the show into your curriculum and to help your students prepare for the show. In the packet, you will find a list of student objectives, assessments and activities, as well as details about the ways this production fits with the state curriculum standards.

Please join us for this one-of-a-kind theatre production at 10 a.m. on Friday, Oct. 21. Tickets are only \$10 per student for this valuable learning – and life – experience. For more information or to purchase tickets, contact Mollie Francis at (314) 720-7707.

We'll see you on the Yellow Brick Road!

Sincerely,

Jan Albus
Executive Producer, Variety Children's Theatre



STUDY GUIDE

presented by Variety Children's Theatre

CREDITS

Variety's production of *THE WIZARD OF OZ* boasts some of the city's most talented professionals, both on-stage and behind-the-scenes, along with a full orchestra.

- Tony Award Nominee Lara Teeter as director
- MUNY costume coordinator Pete Messineo
- Webster University's scenic designer Dunsai Dai
- Alexis Kinney as Dorothy
- Whit Reichert as the Cowardly Lion
- John Flack as the Scarecrow
- Justin Ivan Brown as the Tin Man
- Elise LaBarge as the Wicked Witch
- Pam Reckamp as Auntie Em
- Rich Pisarkiewicz as Uncle Henry
- Alan Knoll as Professor Marvel/The Wizard
- Spencer Milford as Jitterbug
- Jack Sippel as Nikko

3

DID YOU KNOW?

Actor Frank Morgan played five different characters in The Wizard of Oz film. You can see him as: Professor Marvel, Emerald City Gatekeeper, Horse of a Different Color Driver, Wizard's Guard, and The Wizard of Oz.



At left, Justin Brown as the Tin Man, Alexis Kinney as Dorothy, John Flack as the Scarecrow and Whit Reichert as the Cowardly Lion.



STUDY GUIDE

presented by Variety Children's Theatre

The Wizard of Oz PLOT SUMMARY

The Wizard of Oz, written by L. Frank Baum and published in 1900, is a story of magical wonder as Dorothy, a young girl from Kansas, is transported, along with her dog Toto, to the dream world of Oz by a tornado that sweeps her farm house away. The storm carries the house with Dorothy and Toto to Munchkinland, a magical place far away from anything that Dorothy has ever seen or dreamed of. The land's tiny inhabitants proclaim Dorothy a national heroine, because the house fell on and killed the Wicked Witch of the East, who held power over the Munchkins.

DID YOU KNOW?

A prequel to Wizard of Oz is scheduled to be released in 2013.

The working title is Oz: The Great and Powerful. It will be directed by Spider-Man's Sam Raimi and will star James Franco.

Suddenly, Glinda, the Good Witch of the North, appears and explains all that has happened to Dorothy. Dorothy naturally wishes to return home. However, the sister of the now dead Wicked Witch of the East (the Wicked Witch of the West) makes a startling appearance. Glinda protects Dorothy from the Wicked Witch when

magically the Ruby Slippers that were worn by the dead Witch of the East are now on the feet of Dorothy; as long as she wears the slippers, Glinda says, Dorothy will be safe. The Wicked Witch of the West leaves, and Dorothy is sent along the yellow brick road by Glinda to find the Wizard of Oz and get his help to return to Kansas.

On her way Dorothy befriends a Scarecrow with no brain, a Tin Man with no heart and a Cowardly Lion. The three decide to accompany Dorothy to the Wizard in hopes of obtaining their desires (a brain, a heart and courage, respectively). Along the way, the group confronts a forest of angry apple trees and several failed attempts by the Wicked Witch to stop them. When they arrive at the Emerald City, the populace is threatened by the Wicked Witch, who



STUDY GUIDE

presented by Variety Children's Theatre

DID YOU KNOW?

The Wonderful Wizard of Oz was published in 1900 and became so popular that L. Frank Baum quit his job as a journalist and wrote thirteen more books about the land of Oz.

skywrites a demand for the city to "Surrender Dorothy." The group talks to the Wizard of Oz - a disembodied and imposing head with a booming voice - who says that he will consider granting their wishes if they can bring him the broom of the Wicked Witch. As the story goes on, it is revealed that the Wizard of Oz is really just an ordinary man who has been using trickery to make himself seem all powerful. The Wizard explains that he too was

born in Kansas and his presence in Oz was the result of an escaped hot air balloon. They are outraged at the deception, but the Wizard solves their wishes through common sense and a little double talk rather than magic (even telling them that they had what they were searching for all along).

At the end of the story, the Wizard departs on his hot air balloon, after leaving the Scarecrow, Tin Man and Lion in charge of the Emerald City. Glinda the Good Witch then grants Dorothy's wish to go back home, and Dorothy is whisked away seemingly as fast as she appeared. Back in Kansas, Dorothy awakens in her bedroom surrounded by family and friends and tells them of her journey. Everyone laughs and tells her it was all a bad dream. A happy Dorothy, still convinced the journey was real, hugs Toto and says, "There's no place like home."



STUDY GUIDE

presented by Variety Children's Theatre

WHO'S WHO IN OZ

Dorothy: A young, empathetic girl who goes on a magical journey through Oz.

Toto: Dorothy's faithful pet dog.

Auntie Em & Uncle Henry: Dorothy's Aunt and Uncle, both of whom are greatly distressed after Dorothy runs away with Toto.

Admira Gultch: A rich and powerful neighbor of Dorothy's family. Miss Gultch is bad tempered and furious after she is bitten by Toto.

Professor Marvel: A man who Dorothy meets when she runs away from the farm. Through his crystal ball he shows her Auntie Em and Uncle Henry in a panic over her missing.

The Wicked Witch of the East: Rules over the land of the Munchkins until she is squashed under Dorothy's house.

Glinda (the Good Witch): A benevolent witch who helps Dorothy on her journey.

The Munchkins: Citizens ruled by the Wicked Witch of the East.

The Wicked Witch of the West: The sister of the Wicked Witch of the East. She is determined to get the Ruby slippers from Dorothy.

The Scarecrow: Accompanies Dorothy on her journey because he wants to get a brain.

The Tin Man: Accompanies Dorothy on her journey because he wants to get a heart.

The Lion: Accompanies Dorothy on her journey because he wants to get courage.

The Winkies: Soldiers ruled by the Wicked Witch of the West.

The Wizard of Oz: Lives in the Emerald City and holds the answers to Dorothy's quest.

DID YOU KNOW?

Toto was originally played by a Cairn Terrier named Terry. After the success of The Wizard of Oz, Terry's name was officially changed to Toto. Toto has appeared in over 10 Hollywood films and even has her own listing on the Internet Movie Database (IMDB.com).



STUDY GUIDE

presented by Variety Children's Theatre

WHERE'S WHERE IN OZ

Kansas: Where Dorothy lives on a farm with her Auntie Em and Uncle Henry.

Oz: The magical kingdom where Dorothy is transported after a tornado.

Munchkin Land: Where the Munchkin people live. This is the first place Dorothy sees in the land of Oz.

The Yellow Brick Road: Runs through Oz and leads to the Emerald City.

Emerald City: Where the Wizard of Oz lives.

The Enchanted Forest: A frightening place Dorothy and her friends must travel through to retrieve the Wicked Witch's broomstick.

Winkie Land: Where the Winkies live. They are ruled by the Wicked Witch of the West.



Dorothy stops along the way on the Yellow Brick Road to help a wobbly Scarecrow to his feet.

DID YOU KNOW?

Baum thought up the name for Oz when looking at his filing cabinets, organized A-N and O-Z.



STUDY GUIDE

presented by Variety Children's Theatre

LESSON #1 - ADAPTATION

An **ADAPTATION** is a written work (such as a novel) that has been recast in a new form. An artist may choose to create an adaptation for several different purposes — to update a period piece, to highlight a specific premise/theme or to create a resistant reading of the original text.

8

Classroom Activities:

1. Compare and contrast a scene from the movie and the stage musical. What changes from the screen to the stage? Then read the same section from the novel. How is the written form similar or different?
2. Imagine that you are Dorothy's dog, Toto. How would Toto tell the story?

DID YOU KNOW?

In the original manuscript, the color of Dorothy's slippers was silver and then later changed to ruby when adapted for film. Because the film was being filmed in Technicolor, it was decided to change them to something more colorful.



STUDY GUIDE

presented by Variety Children's Theatre

LESSON #2 – FAIRY TALE

Fairy tales are fanciful stories that often have a strong moral message. Over time, the nature of fairy tales has changed significantly. In the nineteenth and early twentieth century, the central European folk tales collected by the Brothers Grimm were immensely popular. These stories were quite frightening and included harsh punishments for wrongdoing. The primary audience for these scary tales were children.

L. Frank Baum was one of the central influences in developing a new direction in children's literature. Baum wanted to create stories that inspired and encouraged young people rather than frightening them. His "American fairy tale," *The Wizard of Oz*, was extremely popular with both the public and the critics. Readers were mesmerized by the fairy tale nature of the story coupled with recognizable American language and the setting of Kansas. In particular, readers seemed to enjoy the empowering nature of Dorothy's story. *The Wizard of Oz* reflected the attitude of Americans to make their own and realize their own dreams.

Classroom Activities

1. Research your favorite fairy tale. How has it changed over time? Compare and contrast different versions of the story.
2. Research the difference between fairy tales and folk tales.
3. Brainstorm the morals of different fairy tales. Do the more popular stories have similar or different morals?
4. Why do you think Baum wrote this story when he did? Was there anything going on in the world at that time that might have led him to want to write a pure fairy tale?
5. How is this story the same as or different from, for example, those by the Brothers Grimm?



STUDY GUIDE

presented by Variety Children's Theatre

PRE-SHOW ACTIVITIES

Before attending the show, discuss the elements that go into a theatrical production. Scenery, makeup, costumes, lighting, props and sound effects – each has a unique design and a unique designer. In consultation with the Director, each of these designs is coordinated to produce an overall design concept. By making students aware of these different aspects of production, you can then ask them to comment on their observations of specific design elements after viewing the show.

10

POST-SHOW ACTIVITIES

Interpretation and personal connections

1. How does Dorothy end up in Oz? If you heard about a big storm coming, what would you do? Does your family have any drills or procedures to prepare for a tornado? What about at school?
2. Along the way, Dorothy meets the Scarecrow, the Tin Man and the Lion. How do her friends help her defeat the Wicked Witch? When have you worked together with your friends to accomplish a difficult task?
3. The Lion wants to ask the Wizard for courage, but do you think the lion shows bravery before he gets to the Wizard? How? Have you ever had to be brave in a tough situation? What does being brave mean to you?

Writing Activities

1. Suppose the Wicked Witch of the West had been able to get the ruby slippers before Glinda placed them on Dorothy's feet. What do you think would have happened to Dorothy? Would she have been able to return to Kansas? Would she have met the characters in Oz? What would Glinda have done at that moment? Write your version of the outcome of the story with this twist. Be specific and include some interesting and exciting details.
2. Dorothy was fortunate to meet so many unusual and colorful personalities in Oz who gave her support and friendship during her quest to find the Wizard. Describe your favorite character in detail. Explain why you selected this particular character, and what advice you would have given Dorothy when she met him/her.



STUDY GUIDE

presented by Variety Children's Theatre

LESSON #3 – INCLUSION & DIVERSITY

Inclusion means to accommodate someone with a disability. Inclusion advocates the idea that all people should freely, openly and without pity accommodate any person with a disability without restrictions or limitations of any kind.

- **Ask students to give an example of a time they included someone else in an activity.**

The concept of **diversity** encompasses acceptance and respect. It means understanding that each individual is unique, and recognizing our individual differences. This concept can be along the dimensions of race, ethnicity, gender, sexual orientation, socio-economic status, age, physical abilities, religious beliefs, political beliefs or other ideologies.

- **Ask students to give an example of diversity in their neighborhood or family.**

Disability is an umbrella term, covering impairments, activity limitations and participation restrictions. An impairment is a problem in body function or structure; an activity limitation is a difficulty encountered by an individual in executing a task or action; while a participation restriction is a problem experienced by an individual in involvement in life situations. Disability reflects interaction between features of a person's body and features of the society in which he or she lives.

- **Ask students to talk about someone they know who has a disability.**

There are **two types of disabilities**: physical and mental. A physical disability is an impairment of the human body. People with physical disabilities often must rely upon assistive devices such as wheelchairs, crutches, canes and artificial limbs to obtain mobility. A mental disability is a generalized disorder, characterized by significantly impaired cognitive functioning and deficits in two or more adaptive behaviors with onset before the age of 18.

- **Ask students to give examples of disabilities.**

DID YOU KNOW?
The Wizard of Oz has been translated in sixty different languages.



STUDY GUIDE

presented by Variety Children's Theatre

Diversity includes people with disabilities. Title I and Title V of the Americans with Disabilities Act of 1990, prohibit employment discrimination against qualified individuals with disabilities. The vision of the US Department of Labor Office of Disability Employment Policy is to encourage a world in which people with disabilities have unlimited employment opportunities. Variety the Children's Charity strives to help children with disabilities reach their full potential.

12

- **Ask students why they think diversity is important.**

A challenge is a stimulating task or action arousing competitive interest, thought or action.

- **Ask students to give examples of challenges they have faced, and how they overcame those challenges.**



Daunte (left) and Dorothy know all about diversity. Daunte, who plays a Munchkin, is one of 15 Variety children in the cast of *THE WIZARD OF OZ*.



STUDY GUIDE

presented by Variety Children's Theatre

VARIETY KIDS INVOLVED IN THE WIZARD OF OZ

From tryouts to production, Variety Children's Theatre allows children of all abilities to learn on-stage and backstage production skills from seasoned professionals. The inclusive setting offers an unmatched opportunity to develop important relationships, skills sets and appreciation of the overall workings of a live musical theater program.

The Wizard of Oz will feature 15 Variety children performing on-stage.

Munchkins

- Lily, Cerebral palsy and developmental delay
- Meghan, Cerebral palsy
- Joseph, Leukodystrophy
- Gracie G., Cerebral palsy
- Gracie K., Hemiparesis
- MacKenzie, Spina Bifida
- Daunte, Spina Bifida
- Kaitlyn, Down syndrome and hearing loss
- Mckenzie, Cerebral palsy

DID YOU KNOW?
The Wizard of Oz was the first major movie to be shown on network TV in 1956.

Ozian

- Shane, Developmental delay and seizure disorder
- Hannah, Spina Bifida
- Emma, Cerebral palsy

Jitterbug

- Kaci, Spinal muscular atrophy
- Libby, Spina bifida

Poppie

- Ashley, Cerebral palsy



MacKenzie (left) is just one of 15 Variety Children in the cast. She plays a Munchkin.



STUDY GUIDE

presented by Variety Children's Theatre

In addition to the on-stage talent, each major role in the *Wizard of Oz* production boasts a Variety "shadow," allowing the children to learn life-long skills alongside the show's production director, musical director, choreographer, stage manager, sound technician, costume designer and more.

14

Assistant to the Executive Producer

Mallory, Hypotonia

Assistant to the Musical Director

Alex, lost his right leg due to cancer

Assistant to the Production Manager

Luke, Spastic dislepia

Assistant to the Production Director

Caleb, Cerebral palsy

Assistant to the Assistant Production Director

Mia, Spina bifida

Assistant to the Sound Designer

Zach, Cerebral palsy

Assistant to the Lighting Designer

Shayne, Hearing loss and developmental delay

DID YOU KNOW?

The Wizard of Oz film was deemed "culturally significant" by the United States Library of Congress, which selected it for preservation in the National Film Registry in 1989.



STUDY GUIDE

presented by Variety Children's Theatre

TYPES OF DISABILITIES

Cerebral Palsy is a disability resulting in injury to the brain before or during birth. The severity of symptoms varies in every child. *(Caleb, Zach, Lily, Gracie G., McKenzie, Emma, Ashley all have Cerebral Palsy)*

Spastic Displegia is a form of cerebral palsy where both arms and legs have abnormal stiffness. The legs are more often affected than the arms. *(Luke has Spastic Displegia)*

Hypotonia is low muscle tone resulting in muscle weakness. *(Mallory has Hypotonia)*

Spinal muscular atrophy is a neuromuscular disease that causes progressive muscle degeneration and weakness. *(Kaci has Spinal Muscular Atrophy)*

Spina Bifida is a congenital birth defect where the spinal column does not close and the spinal cord is injured. This leaves the child with a spinal cord injury. *(MacKenzie, Daunte, Libby, Mia, Hannah all have Spina Bifida)*

Leukodystrophy is a rare and progressive genetic disorder that affects the central nervous system. *(Josephy has Leukodystrophy)*

Hemipareisis is a weakness on one side of the body. *(Gracie K. has Hemipareisis)*

Down syndrome is a genetic condition in which the child has 47 chromosomes instead of the usual 46. The symptoms vary from child to child. *(Kaitlyn has Down Syndrome)*

DID YOU KNOW?

In 1990, The Wizard of Oz
was honored on a United
States postage stamp.



STUDY GUIDE

presented by Variety Children's Theatre

STATE CURRICULUM STANDARDS

Communication Arts

- 2. Reading and evaluating fiction, poetry and drama
- 5. Comprehending and evaluating the content and artistic aspects of oral and visual presentations (such as story-telling, debates, lectures, multi-media productions)

16

Fine Arts

- 1. Process and techniques for the production, exhibition or performance of one or more of the visual or performed arts
- 3. The vocabulary to explain perceptions about and evaluations of works in dance, music, theater and visual arts
- 5. Visual and performing arts in historical and cultural contexts

Social Studies

- 5. The major elements of geographical study and analysis (such as location, place, movement, regions) and their relationships to changes in society and environment
- 6. Relationships of the individual and groups to institutions and cultural traditions

Refer to the Missouri Department of Elementary and Secondary Education at

<http://dese.mo.gov/standards/> for more information.



STUDY GUIDE

presented by Variety Children's Theatre

Q&A with SCENIC DESIGNER DUNSI DAI

What inspired you to become a scenic designer?

I simply wanted to get a job and have some fun!

What was your first job in set design?

I designed "Jungle Book" for Houston Children's Theatre Festival. It was my first set design for a professional theatre in the States.

What is your proudest career accomplishment thus far?

I won a Kevin Kline Award in the category of Best Set Design (2007) and was nominated for that award again in 2008.

What's the hardest part about creating a set design?

After much devoted work, you may think you have a solution to all of your challenges, only to be told that you have to cut back due to a budget limitation. This happens more often than you think it would, even after much strategic planning.

What other members of the production team do you collaborate with?

Producer, director, production manager, costume designer, lighting designer, technique director, scenic artist, prop master, etc...pretty much everyone!





STUDY GUIDE

presented by Variety Children's Theatre

How did you train to become a scenic designer?

I got my BA from the Central Academy of Drama in Beijing, China, my MA from Stanford University, and my MFA from University of Illinois at Urbana-Champaign.

How did you come up with the sets for *The Wizard of Oz*?

The director, Lara, and I had an hour-long talk and went through every scene of the show. Through this talk, I collected Lara's vision of this piece, and how he wanted to mount this show. In the following production team meeting, I further collected information/plans from other production members, such as our choreographer, on their needs in the physical world of the stage. Then, through much visual research in the direction of Lara's vision, I started to sketch out the set and worked out the floor plans in physical planning. After a couple of revisions, we landed on this current plan.

DID YOU KNOW?

**The first stage production of
THE WIZARD OF OZ opened
in Chicago on June 16, 1902**

the WIZARD of Oz

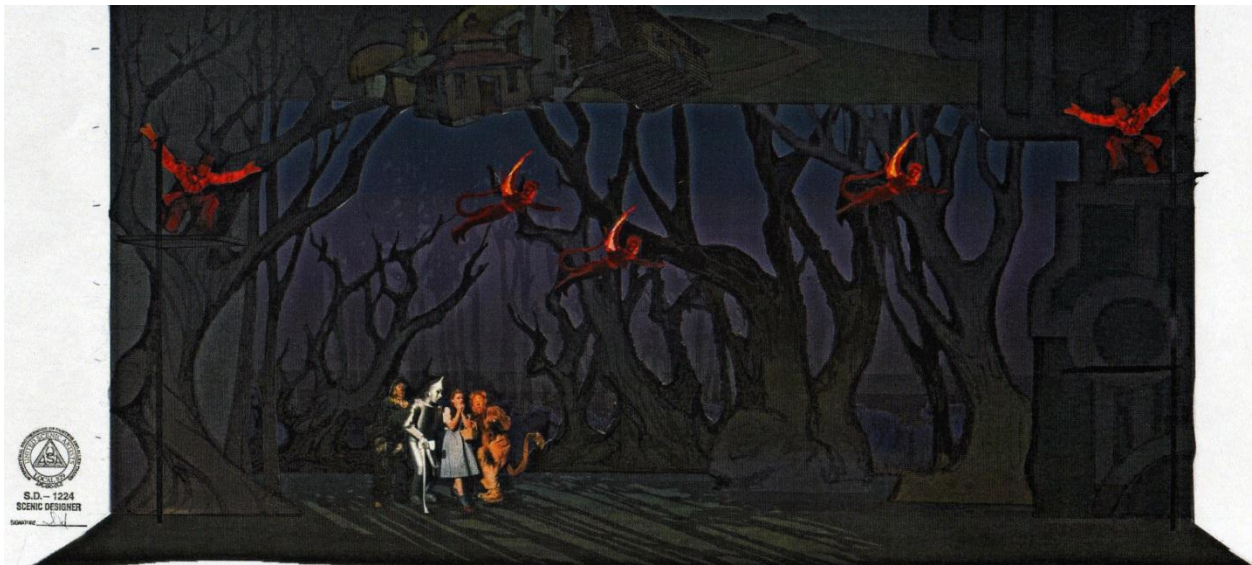
STUDY GUIDE

presented by Variety Children's Theatre

Two designs by Dunsai Dai for Variety Children's Theatre's production of "The Wizard of Oz"



19





STUDY GUIDE

presented by Variety Children's Theatre

CLASSROOM ACTIVITY: Grades K-4

Color in Dorothy and her friends from Oz!

20



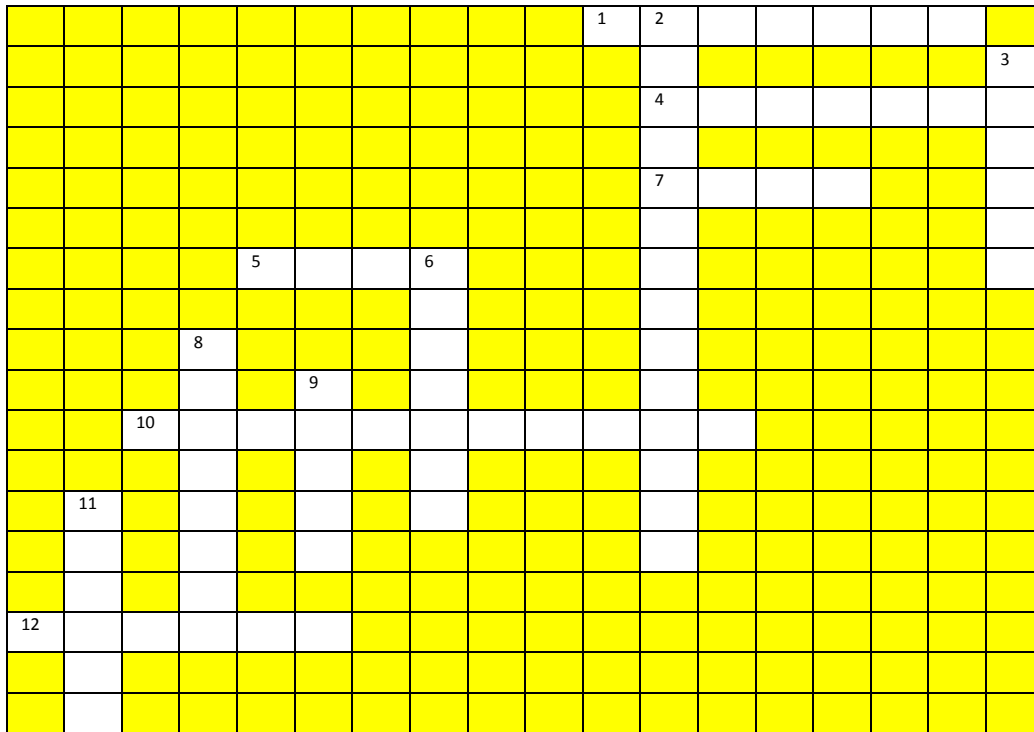


STUDY GUIDE

presented by Variety Children's Theatre

CLASSROOM ACTIVITY: Grades 5-8

The Scarecrow wants to see the Wizard of Oz because he would like a brain. But until he gets there, he needs your help! Use your own brain, as well as books, the internet, and even a parent to complete the crossword below.



Across

- 1. What flying animals does the Wicked Witch of the West use?
- 4. In "Wicked," what is the Wicked Witch of the West's name?
- 5. What is Dorothy's last name?
- 7. What is the name of Dorothy's faithful pet?
- 10. What is the name of the woman who played Dorothy in the 1939 movie?
- 12. What is the name of the Good Witch of the North?

Down

- 2. Which song from *The Wizard of Oz* won an Oscar for Best Original Song? (3 words)
- 3. What state does Dorothy live in?
- 6. The Wizard of Oz lives in _____ City.
- 8. How many books did L. Frank Baum write about Oz? (The "Oz" series + "The Little Wizard Stories of Oz")
- 9. What is L. Frank Baum's first name? (What does the 'L' stand for?)
- 11. The Good Witch of the North tells Dorothy to follow the _____ Brick Road.



STUDY GUIDE

presented by Variety Children's Theatre

CLASSROOM ACTIVITY – Grades 9-12

TORNADO IN A BOTTLE

Recreate the twister that sent Dorothy to Oz!

22

Supplies:

- Two plastic soda bottles (2 liter or 20 oz. — do not use glass)
- Water
- Food coloring or glitter (optional)
- Tornado Tube bottle connector OR duct tape

Instructions:

1. Fill one of the soda bottles 2/3 full of water. Screw the Tornado Tube on to this bottle. (If you don't have a Tornado Tube, have an adult drill a 3/8" hole in the two bottle caps and put them back on the bottles.) For fun, you can add glitter or food coloring to the water.
2. Attach the other empty plastic soda bottle of the same size to the other end of the Tornado Tube. (If you don't have a Tornado Tube, secure the caps together with duct tape.)
3. Rotate bottles so that the full bottle is on top. Do not tilt it. With your hand firmly on top of the full bottle, shake the upper bottle in a circular motion. A mini tornado will form.

Try these variations to see how it affects the strength of your tornado.

- use hot and then cold water
- increase the pressure in the bottles by squeezing them
- change the amount of water
- change the type of liquid in the bottle



STUDY GUIDE

presented by Variety Children's Theatre

About Variety the Children's Charity of St. Louis



Variety the Children's Charity of St. Louis is a multi-faceted organization with one simple mission: To help local children with disabilities reach their full potential by providing services *every time they need assistance*. **Variety annually impacts more than 14,500 children across 30 counties, spanning 547 zip codes.**

23

Kids on the Go Mobility Program

Variety assists more than **1,400 St. Louis-area children** by providing them with durable medical equipment – including wheelchairs, augmentative speech devices, leg braces, hearing aids, prostheses, and van lifts – that empowers them to be physically independent.

Developmental Programs

Throughout the year, Variety conducts a number of inclusive programs that allow local children with physical and mental disabilities the same opportunities as their able-bodied friends. Highlights include:

- **Adventure Camp:** Where the impossible becomes possible through fun, challenging activities in the areas of sports, fitness, sensory art and music.
- **Bikes for Kids:** Providing custom therapeutic bikes, as well as traditional bikes, to Variety children each December.
- **St. Louis through the Eyes of a Child with a Disability:** A field trip for Variety children and their families to experience some of the city's most treasured attractions together.
- **Variety Children's Chorus:** Comprised of talented children who receive equipment and/or funding from Variety, as well as children without disabilities.
- **Variety Children's Theatre:** Bringing together children of all abilities with professional adults in one of the city's top performance venues to create an unforgettable experience for theatergoers, cast and crew alike.

Partner Agencies

To further serve children with physical and/or mental disabilities, Variety partners with **80+ specialized agencies** throughout the metro area to provide therapy/medical services, education, and counseling. One dynamic element of these partnerships is Variety's **Sunshine Coach Van program**, in which Variety provides passenger vans to its partners to transport children across the St. Louis area to doctor appointments, therapy sessions and special outings or activities.

Emerson Resource Center

Overseen by Variety's Program Director, the Emerson Resource Center provides valuable information and community connections to resolve the legal, social, therapeutic, education, medical and counseling issues often encountered by families of children with disabilities. The Resource Center's signature event is the annual **Community Connections Forum**, bringing together families, educators and experts in special needs to network and address growing trends in the field.